

PROPOSED INTERIORS /
RENOVATION OF
STATE BANK OF INDIA, AT
B.O. MATTAUR, SECTOR -70
MOHALI, PB.

DATA CABLE / NETWORKING & TELEPHONE

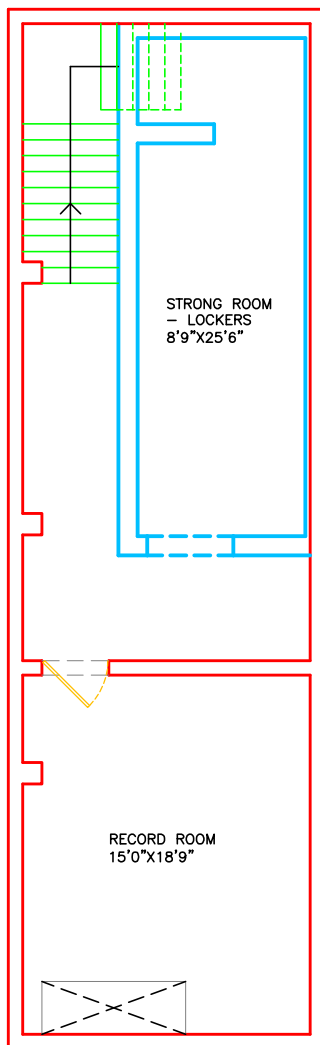
LEGEND

S.NO.	DESCRIPTION	SYMBOL	
01.	NETWORKING POINT		
02.	TELEPHONE POINT		
03.	NETWORKING /RACK		
04.	TEG BLOCK		

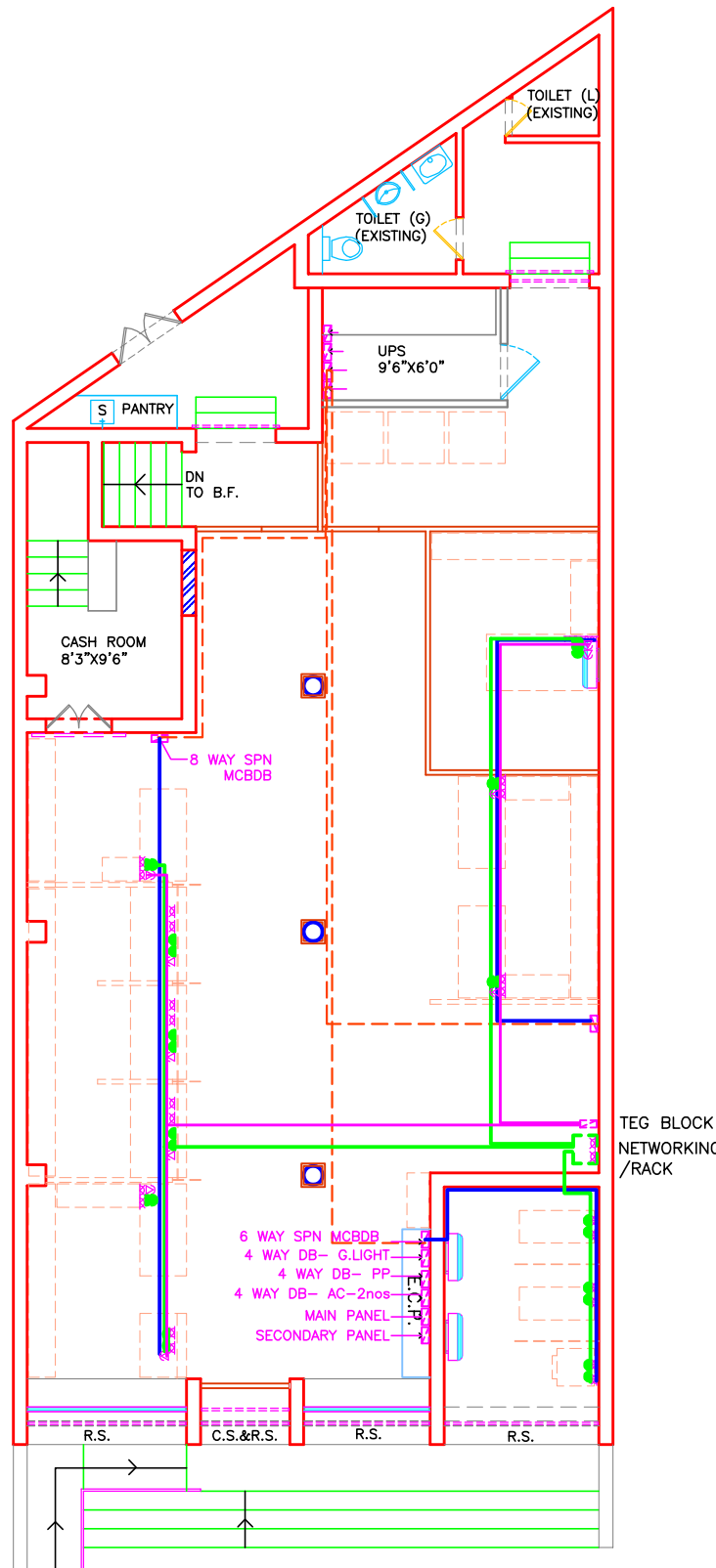
NETWORKING LINE ROUTE
UTP CAT-6 CABLE IN 2MM
THICK 25 MM DIA

NOTE - LED POINT AS PER
BM ADVICE

TELEPHONE LINE ROUTE -
WIRING FOR TELEPHONE POINTS
WITH 0.5 MM DIA 2 PAIR
INSULATED ANNEALED TINNED
ELECTROLATIC COPPER
CONDUCTOR IN 2MM THICK
25MM DIA



LAYOUT PLAN - B.F.



LAYOUT PLAN - G.F.

REV.	DESCRIPTION	DATE
TITLE:	NETWORKING & TELEPHONE LINE ROUTE	

SCALE 1"=8'-0"

DATE 03/03/25

JOB NO. SBI-S70M/01

DRG. NO. WD-06

CREATIVE CONCEPTS

ARCHITECTS, PLANNERS, INT. DESIGNERS

BOOTH NO-32, SECTOR - 25

PANCHKULA - 134116.

PH. 09815788192 (M)