

PROPOSED INTERIORS /  
RENOVATION WORK FOR  
STATE BANK OF INDIA, B.O. &  
PROPOSED INTERIORS FOR  
WEALTH - SIGNATURE LOUNGE  
AT B.O.- SME , KANAK MANDI,  
HOSIARPUR (PB).

**ELECTRICAL DB'S & UPS ROUTE**

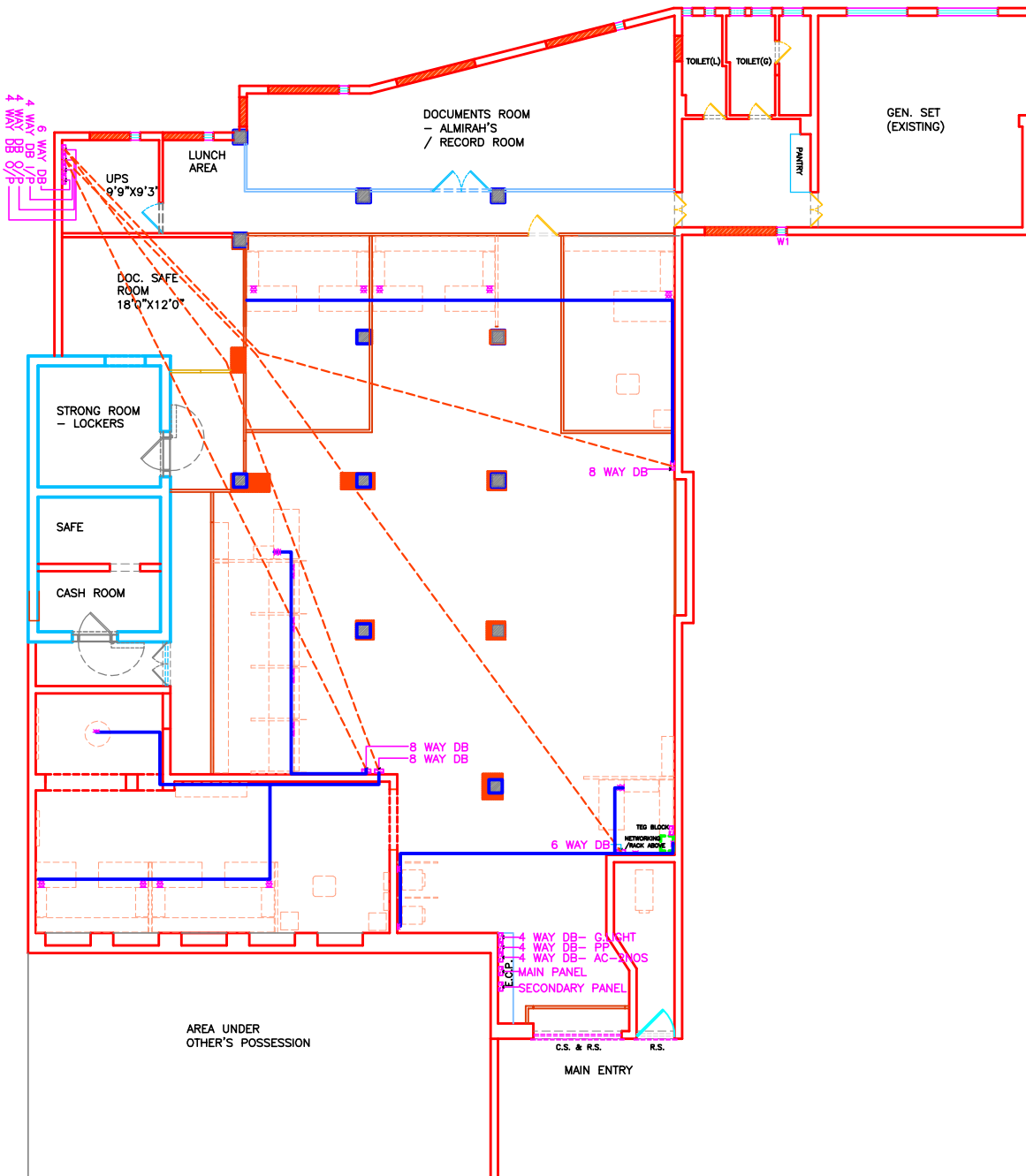
**LEGEND**

UPS LINE / ROUTE  
- 3 X 2.5 SQ.MM. PVC  
INSULATED COPPER  
CONDUCTOR ARMoured CABLE



3 NO. 5 AMP 3 PIN MODULAR  
SOCKET CONTROLLED BY 1  
NO. 5 AMP MODULAR SWITCH  
WITH INDICATOR , CONNECTION  
END TERMINATIONS WITH  
SUITABLE SIZE OF GLANDS  
ETC. COMPLETE AS REQD.  
(ON UPS POWER).

3X6 SQ.MM. COPPER  
CONDUCTOR (UPS DB'S)



LAYOUT PLAN - G.F.

REV.	DESCRIPTION	DATE
	TITLE: LAYOUT PLAN - ELECTRICAL DB'S & UPS ROUTE	
	SCALE 1"=8'-0"	
	DATE 01/03/24	
	JOB NO. SBI-SMEH/01	
	DRG. NO. WD-05	
<b>CREATIVE CONCEPTS</b>		
ARCHITECTS, PLANNERS, INT. DESIGNERS		
RESI.C.O. - 1350, SECTOR - 25		
PANCHKULA- 134116.		
PH. 09815788192 (M)		